



The TT110 is the lightest alu hall in our range and very suitable for events. It is easy to build with two people, without using machines such as a forklift or crane. Its light weight makes it easy to build in places that are difficult to reach.

This tent can be fully customised to your needs. The standard widths are 3, 5, 6, 8 and 10 metres, but we can also produce customised dimensions for you. The basis of this alu hall is a canopy of PVC tarpaulin with PVC side walls, but it can be extended with hard walls and glass walls. Would you like to know more about the possibilities of the TT110? Please contact our specialists!



This tent type is **widely used for:**



Exhibitions & conferences



Events



Showrooms



Hospitality



Retail



VIP rooms

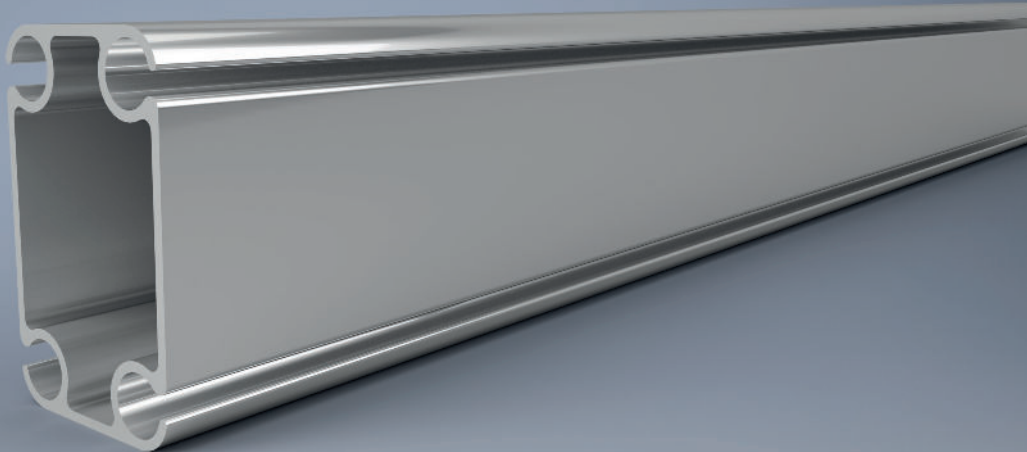


Festivals



Weddings

TT110



General specification

Width:	3.00 m 5.00 m 6.00 m 8.00 m 10.00 m <i>Intermediate sizes upon request</i>
Length:	Unlimited extension by 5.00 m
Side height:	2.30 m 3.00 m
Ridge height:	2.85 m - 4.69 m
Roof cladding:	Translucent PVC canvas Opaque (block-out) PVC canvas
Roof construction:	Ridge construction Curved roof construction
Gable covering:	Translucent PVC canvas Opaque (block-out) PVC canvas
Profile dimension:	110 x 68 mm
Roof pitch:	18 degrees
Maximum wind load:	100 km/h
Maximum snow load:	Upon request
Aluminium:	AL6082 AL6005 Natural anodised Highly abrasion-resistant High corrosion resistance

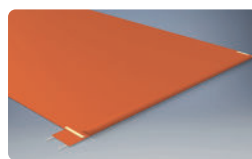
Additional options:



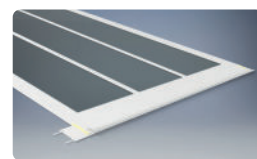
Single wicket door



Double wicket door glazed



Coloured PVC canvas



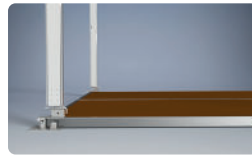
Transparent PVC canvas



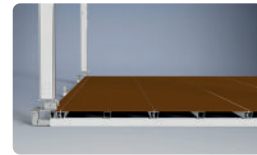
Solid wall panels



Glass wall panels



Heavy-duty flooring



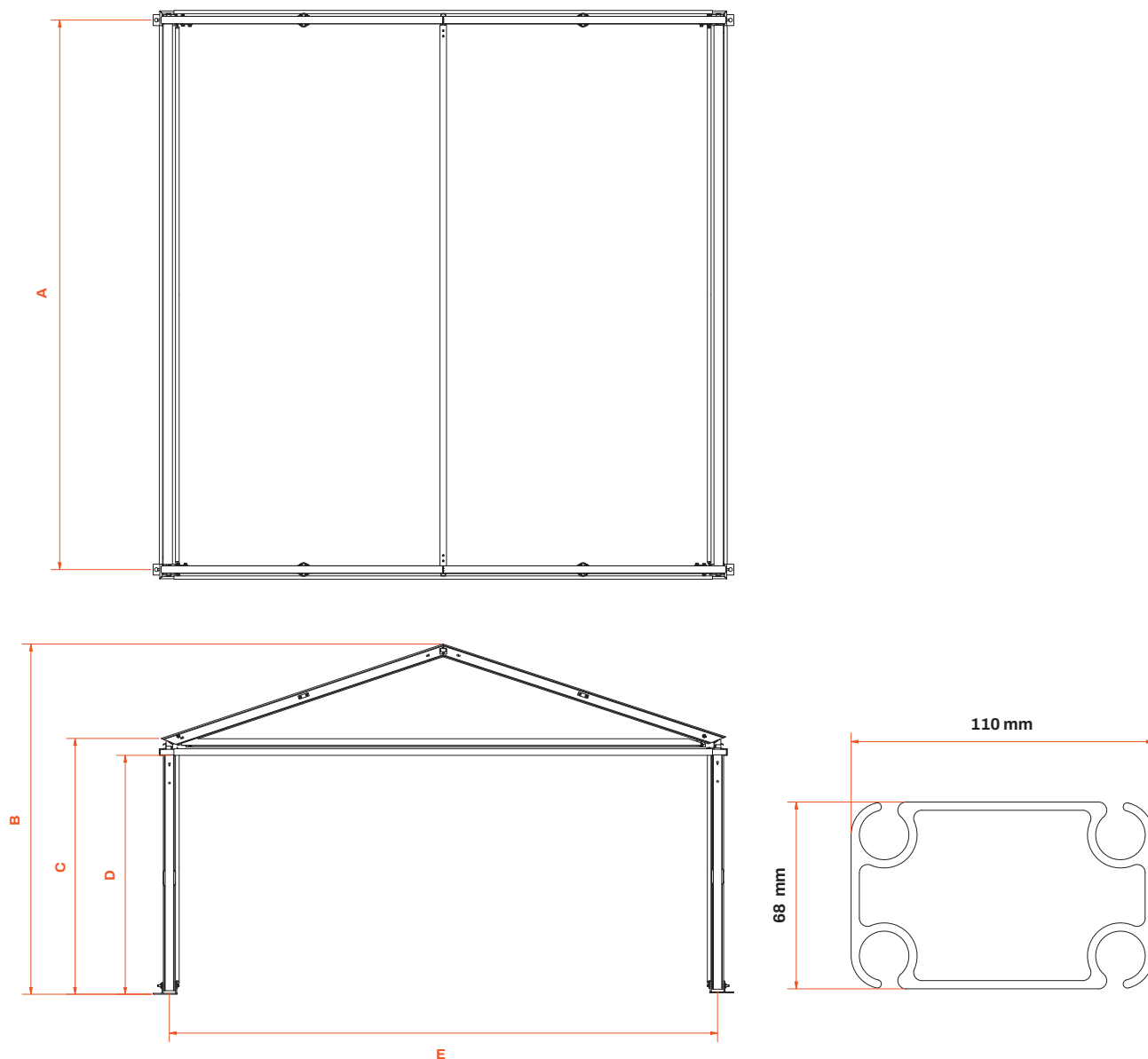
Cassette flooring



Transport rack

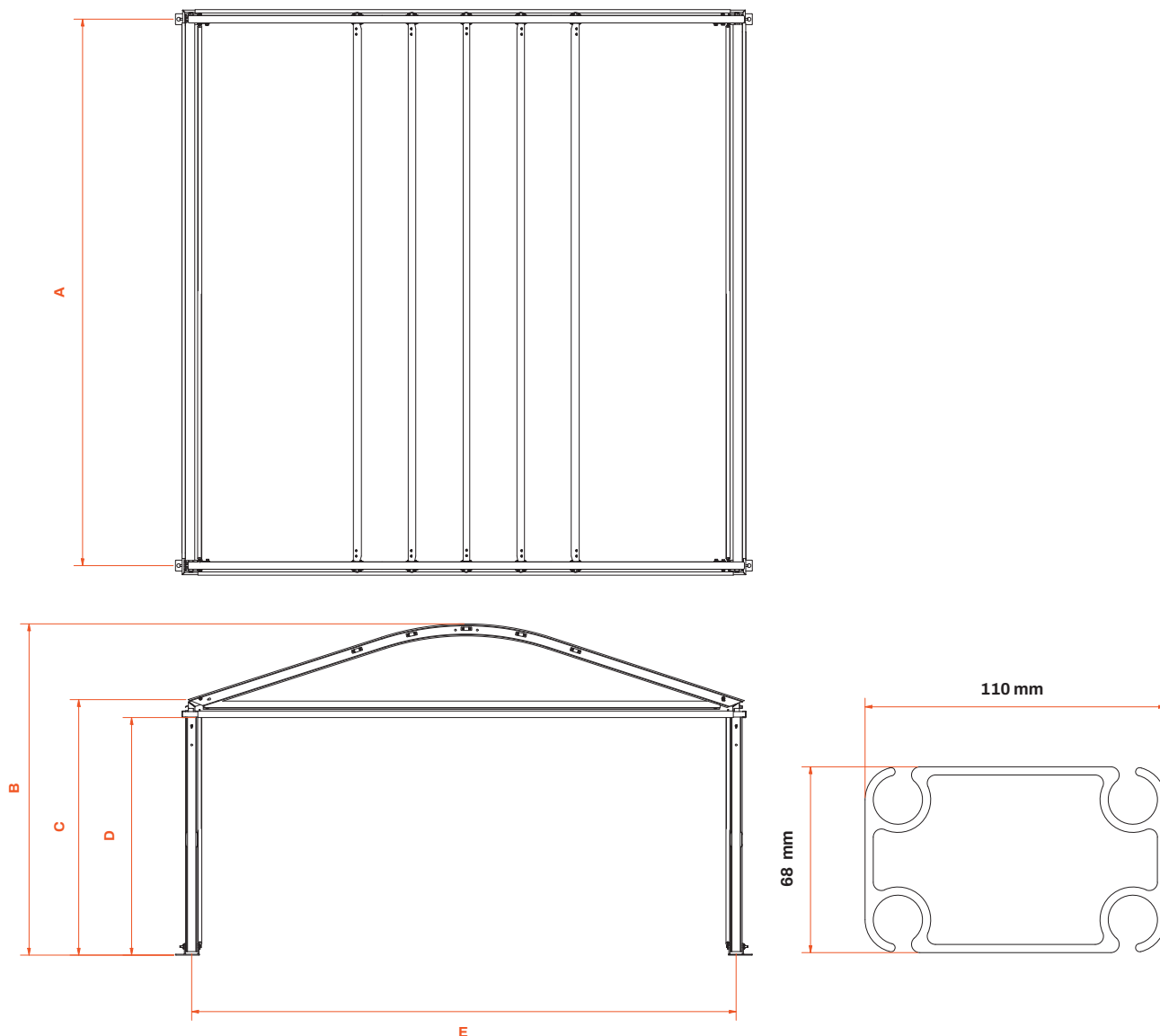


Coupling gutter between alu halls

**TT110 series | 3 and 5 metres | Ridge construction**

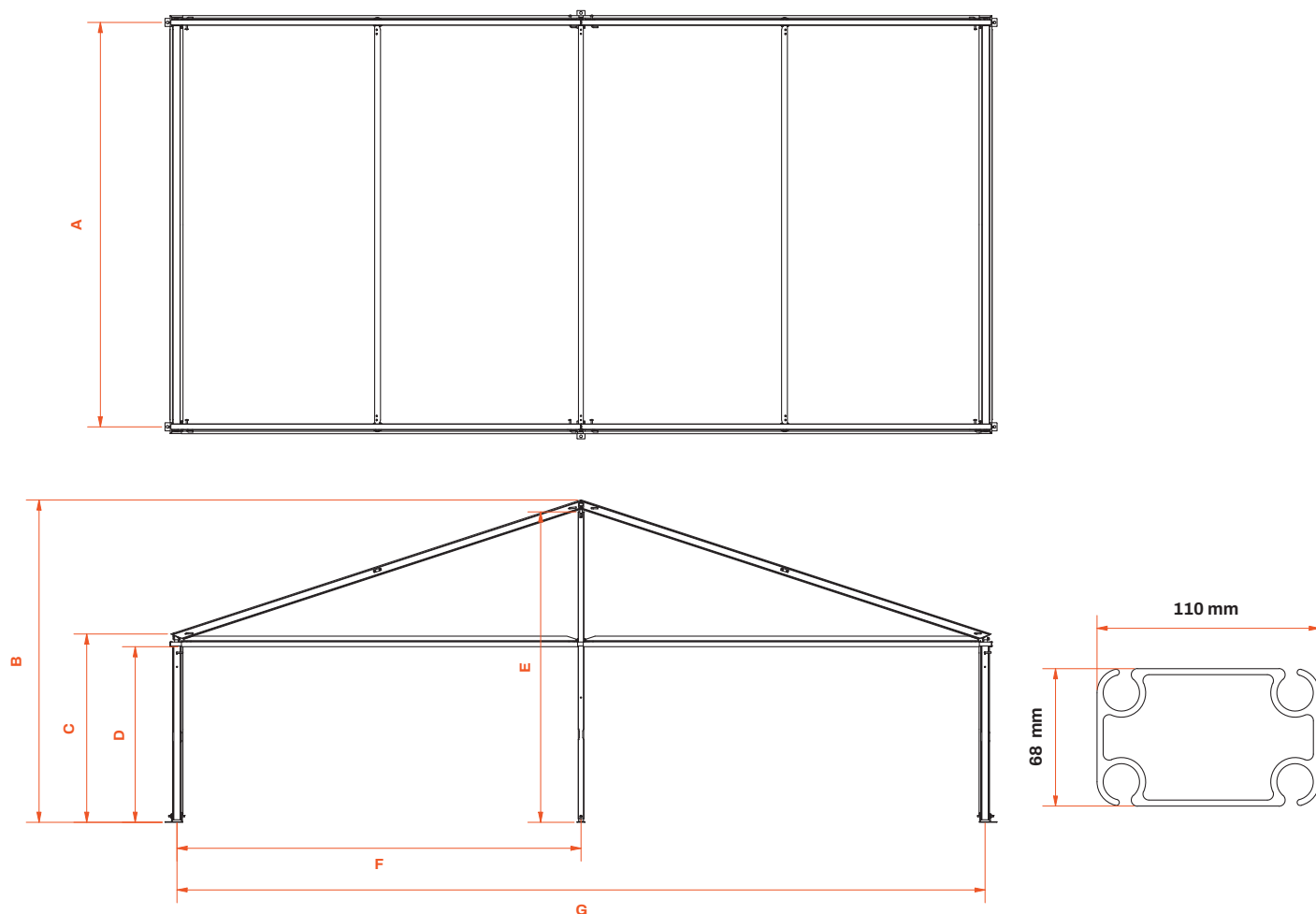
	3.00 m span 2.30 m side height	3.00 m span 3.00 m side height	5.00 m span 2.30 m side height	5.00 m span 3.00 m side height
A Segment length c/c	5,000 mm	5,000 mm	5,000 mm	5,000 mm
B Ridge height	2,845 mm	3,545 mm	3,174 mm	3,874 mm
C Side height	2,329 mm	3,029 mm	2,329 mm	3,029 mm
D Passage height	2,079 mm	2,779 mm	2,079 mm	2,779 mm
E Span c/c	2,993 mm	2,993 mm	4,992 mm	4,992 mm



**TT110 series | 3 and 5 metres | Curved roof construction**

	3.00 m span 2.30 m side height	3.00 m span 3.00 m side height	5.00 m span 2.30 m side height	5.00 m span 3.00 m side height
A Segment length c/c	5,000 mm	5,000 mm	5,000 mm	5,000 mm
B Ridge height	2,715 mm	3,415 mm	3,044 mm	3,744 mm
C Side height	2,329 mm	3,029 mm	2,329 mm	3,029 mm
D Passage height	2,079 mm	2,779 mm	2,079 mm	2,779 mm
E Span c/c	2,993 mm	2,993 mm	4,992 mm	4,992 mm

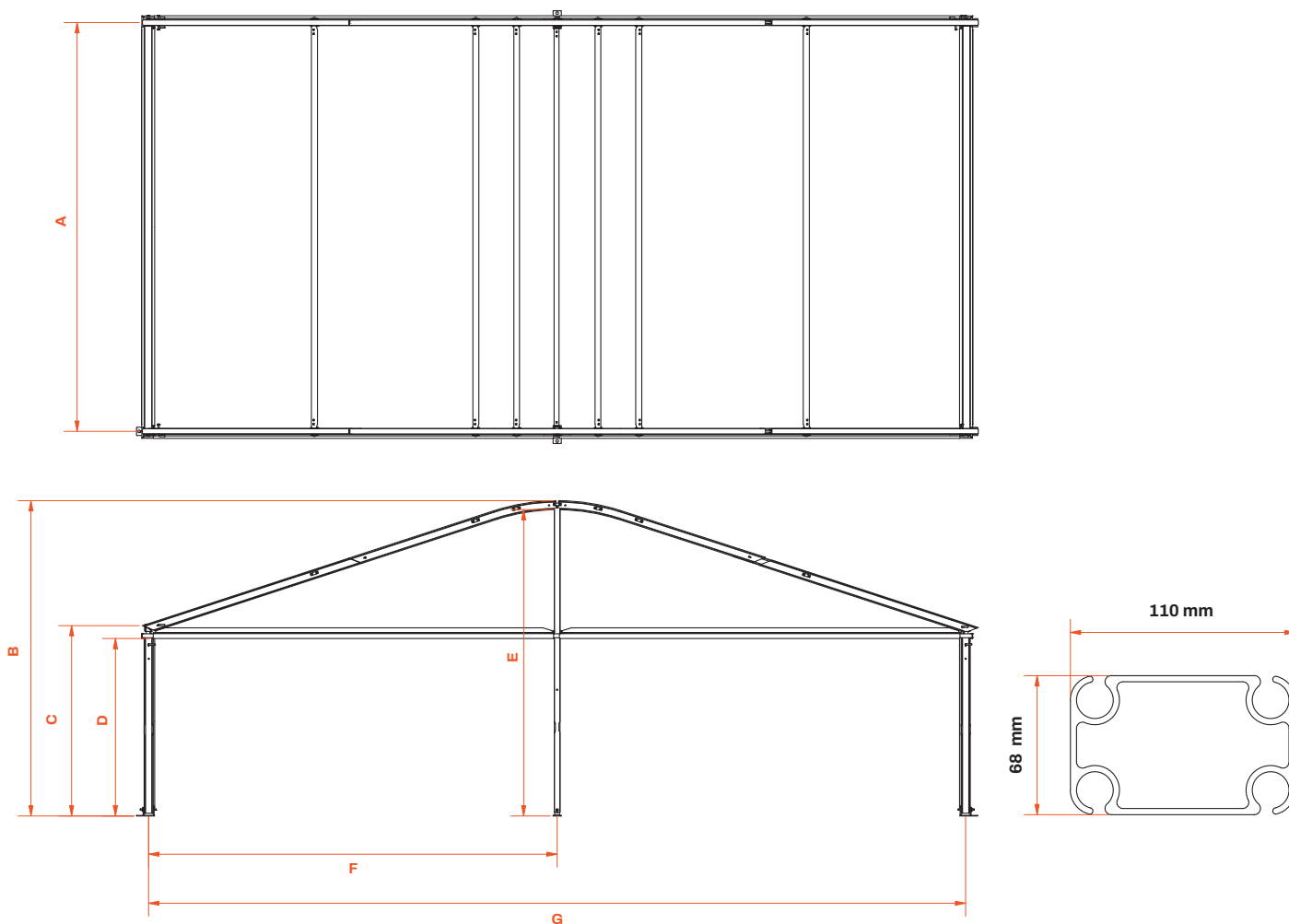




TT110 series | 6 to 10 metres | Ridge construction

	6.00 m span 2.30 m side height	6.00 m span 3.00 m side height	8.00 m span 2.30 m side height	8.00 m span 3.00 m side height	10.00 m span 2.30 m side height	10.00 m span 3.00 m side height
A Segment length c/c	5,000 mm	5,000 mm	5,000 mm	5,000 mm	5,000 mm	5,000 mm
B Ridge height	3,338 mm	4,038 mm	3,666 mm	4,366 mm	3,986 mm	4,686 mm
C Side height	2,329 mm	3,029 mm	2,329 mm	3,029 mm	2,329 mm	3,029 mm
D Passage height	2,079 mm	2,779 mm	2,079 mm	2,779 mm	2,079 mm	2,779 mm
E Façade height	3,140 mm	3,840 mm	3,470 mm	4,170 mm	3,795 mm	4,495 mm
F Columns c/c	2,995 mm	2,995 mm	3,992 mm	3,992 mm	4,997 mm	4,997 mm
G Span c/c	5,989 mm	5,989 mm	7,984 mm	7,984 mm	9,994 mm	9,994 mm



**TT110 series | 6 to 10 metres | Curved roof construction**

	6.00 m span 2.30 m side height	6.00 m span 3.00 m side height	8.00 m span 2.30 m side height	8.00 m span 3.00 m side height	10.00 m span 2.30 m side height	10.00 m span 3.00 m side height
A Segment length c/c	5,000 mm	5,000 mm	5,000 mm	5,000 mm	5,000 mm	5,000 mm
B Ridge height	3,208 mm	3,908 mm	3,536 mm	4,236 mm	3,856 mm	4,556 mm
C Side height	2,329 mm	3,029 mm	2,329 mm	3,029 mm	2,329 mm	3,029 mm
D Passage height	2,079 mm	2,779 mm	2,079 mm	2,779 mm	2,079 mm	2,779 mm
E Façade height	3,010 mm	3,710 mm	3,340 mm	4,040 mm	3,665 mm	4,365 mm
F Columns c/c	2,995 mm	2,995 mm	3,992 mm	3,992 mm	4,997 mm	4,997 mm
G Span c/c	5,989 mm	5,989 mm	7,984 mm	7,984 mm	9,994 mm	9,994 mm

